

# LATITUDE

## OFFSET PEDESTAL FOOT / OFFSET HEADRAIL

Toilet partitions in the Latitude Cubicle System available in both 13mm Compact Laminate and 18mm MR Board.  
Shower partitions available in 13mm Compact Laminate only.

Overall Height: 2100mm.

Overall Depth: 1500mm to 1800mm.

Division Panels: 2100mm high including 100mm floor clearance.

Frontal Panels: 2100mm high including 100mm floor clearance, minimum width 250mm, maximum 450mm.

Doors: 2000mm high with 100mm floor clearance x 600mm wide.

Ambulant doors require a 700mm clearance opening as per AS1428.1-2009.

Privacy profile option available.

Door Hardware: Aqua Series door hardware available in satin chrome or satin matte black finish.

Door hardware kit includes indicator, lockset, bumper, lift off spring hinges and coat hook.

Bolt through option available.

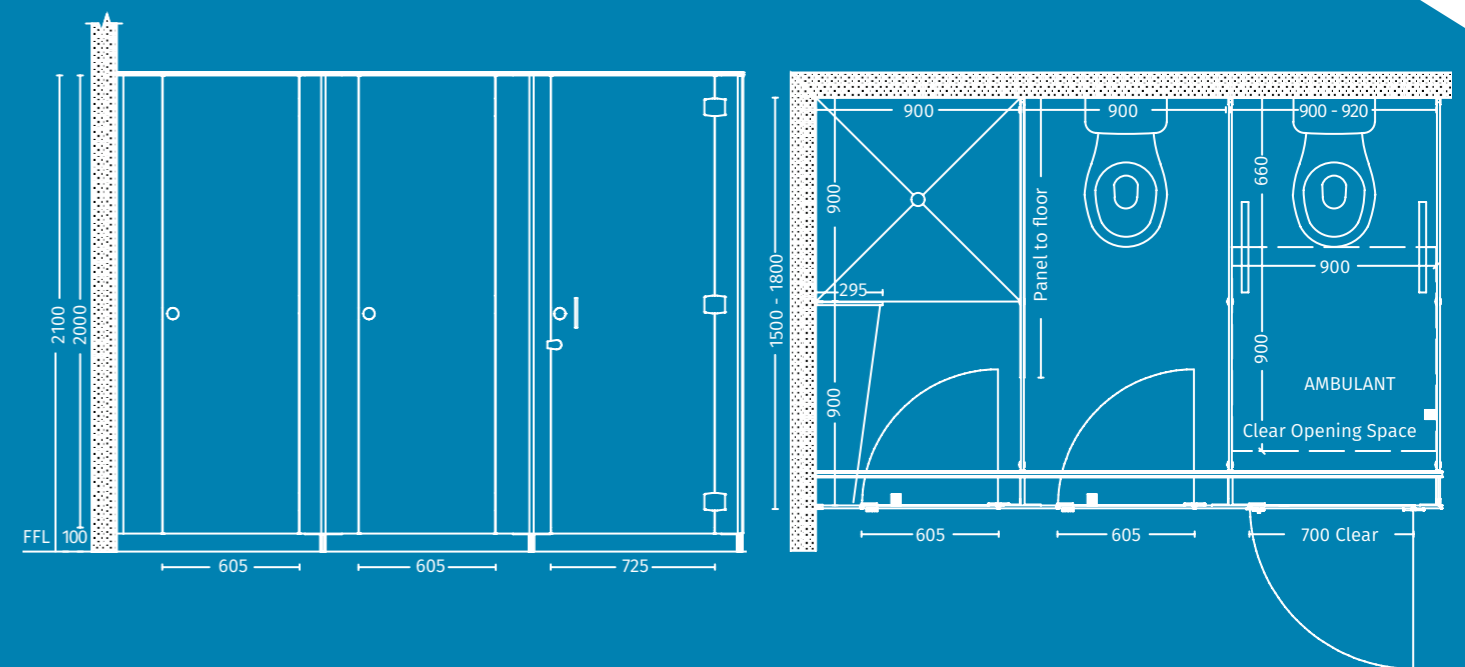
Fittings: Headrail - Offset clear anodised aluminium slimline headrail.

Pedestal - Offset clear anodised aluminium foot.

Wall channels - Clear anodised aluminium U channel.

Powdercoating option available.

Fixings: All in 304 stainless steel.



DOORS: MAICA INVISI BLACK  
FRONTALS: MAICA INVISI BLACK